

COUNTY OF LOS ANGELES
ROAD DEPARTMENT



CULVER QUAD
BENCH MARKS
1960

PREFACE

The Road Department level net is composed of some 1,000 miles of levels supporting more than 10,000 bench marks. In 1955, a major re-adjustment of the net was undertaken resulting in revised bench mark elevations of which the accompanying list is a part.

To facilitate the adjustment, indexing, and distribution of adjusted values of the net, the county territory was divided into 30 quads or areas. For identification purposes each quad was given a name, viz., "Rosemead", "La Mirada", "Santa Fe", etc. When bench marks and elevations in the Road Dept. net are used, the name of the quad in which the bench mark is located and the date of the adjustment of the elevation must be included in the bench mark description, e.g.,

SG 908 - L & T in E. cb. Miscatel Ave. on C/L prod.
Scott St. (Rosemead - 1955) Elev. 333.517

It is expected that this general adjustment will, for the most part, remain sound for the next 15 or 20 years. As new circuits are completed, however, re-adjustment of individual quads may become advisable. It is expected that these subsequent adjustments will be in the nature of a few hundredths of a foot. When a quad is re-adjusted, new elevation lists will be published and the date of the re-adjustment will replace the "1955" at the end of the bench mark description. Two bench marks in the same quad with different adjustment dates will not normally join each other. Since all adjustments taper out to nothing at the periphery of the quad, any bench mark in one quad will join any bench mark in another quad regardless of their respective adjustment dates.

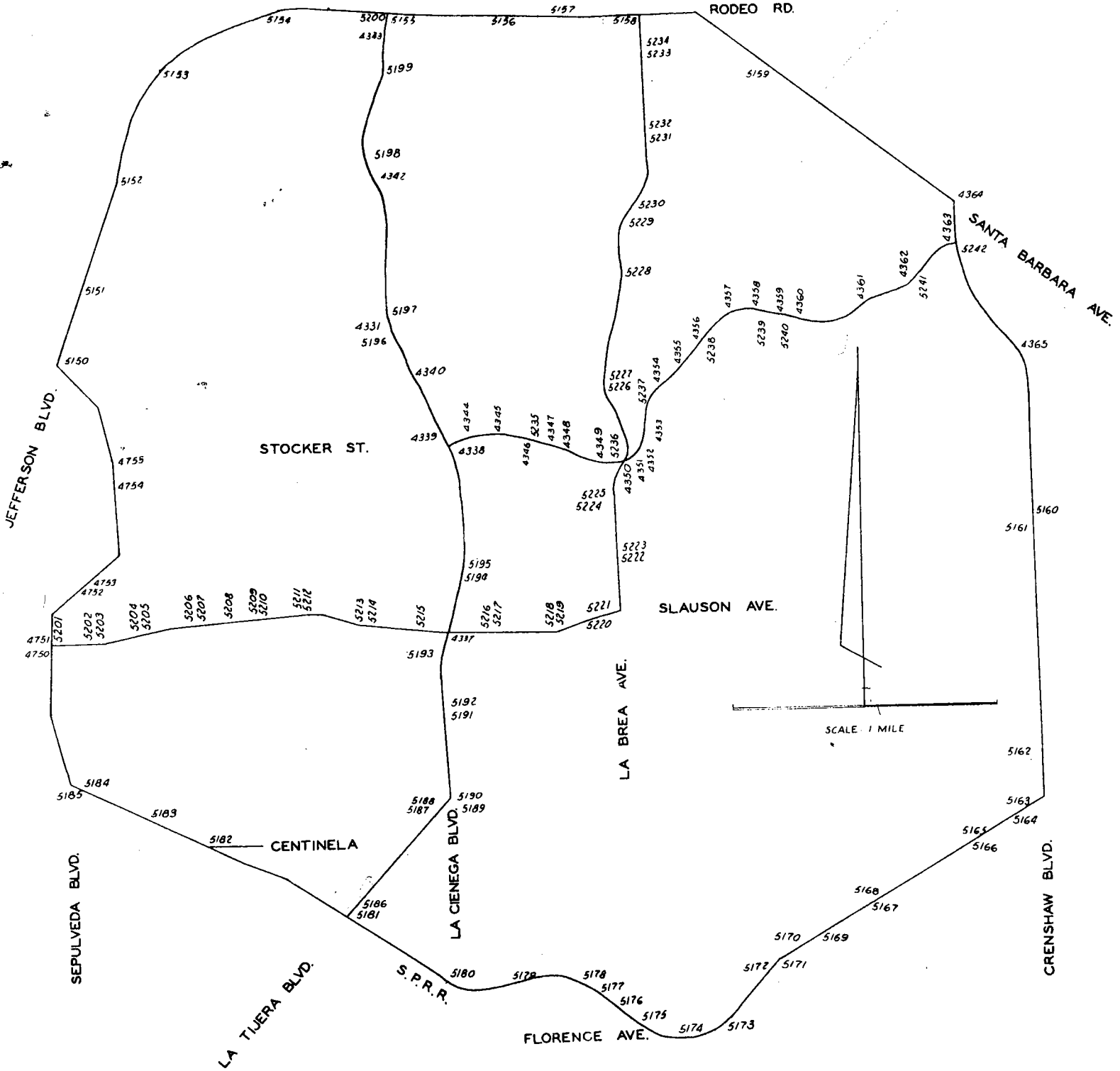
The basic accuracy of the net is reflected by an indicated field probable error of ± 0.12 foot per mile of leveling as determined from 298 conditions of closure. However, many years experience in vertical control in the greater Los Angeles basin & Antelope Valley indicate that because of varying degrees of subsidence and heaving, the true datum is recovered only by obtaining substantial agreement of a number of bench marks.

The users of this net are invited to assist in its maintenance by notifying this Department of cases of obliteration, apparent mistakes in descriptions or elevations, and proven disturbance of bench marks.

Datum: U.S. Coast and Geodetic Survey Sea Level Datum of 1929, through the medium of the Los Angeles County Engineer Precise Level Net, 1952 Adjustment.

Abbreviations Used in Bench Mark Listings

ABUT--Abutment	L+BN--Lead and Bench Mark Nail
ANG PT--Angle Point	L+BR--Lead and Brad
BC--Beginning of Curve	L+N--Lead and Nail
BCR--Beginning of Curb Return	L+PK--Lead and PK Nail
BLDG--Building	L+SPK--Lead and Spike
BT SPK--Boat or Bolt Spike	L+T--Lead and Tack
CB RET--Curb Return	MCR--Middle of Curb Return
C/L INT--Center Line Intersection	MKD--Marked
C/L PROD--Center Line Produced	NR--Near
COE--Corps of Engineers	OPP--Opposite
CONC--Concrete	PI--Point of Intersection
CS MON--County Surveyor Monument	PK+W--PK Nail and Washer
CS BR CAP--County Surveyor Brass Cap Monument	P/L--Property Line
CT SPK--Cut Spike	P O S T--Point on Semi-tangent
CTR--Center	PP--Power Pole
DN--Down	PVMT--Pavement
DR--Driveway	R D--Road Department
EC--End of Curve	RDBM--Road Department Bench Mark
ENT--Entrance	RR--Railroad
FC--Flood Control (Dept. LA County)	SPK T+W--Spike, Tin and Washer
FTG--Footing	USC+GS--United States Coast and Geodetic Survey
HDWL--Headwall	USGS--United States Geological Survey
HSE--House	WK--Walk
IP--Iron Pipe	+--Plus or Minus
LACE--Los Angeles City Engineer	+--And



CULVER QUAD

LOS ANGELES COUNTY ROAD DEPARTMENT
 SURVEY SECTION FIELD ENGINEERING DIVISION

QUAD-YEAR	ELEV	DESCRIPTION (INCLUDE QUAD AND YEAR IN DESCRIPTION)	BM NUMBER
CULVER (1960)	160.820	R D MON @ PI LA CIENEGA BLVD 6FT± W OF W CB 358FT± S SLAUSON AVE	SY 4337
CULVER (1960)	256.962	R D MON @ PI LA CIENEGA BLVD 247FT± S C/L STOCKER ST	SY 4338
CULVER (1960)	266.962	R D MON @ C/L INT LA CIENEGA BLVD + STOCKER ST	SY 4339
CULVER (1960)	292.853	R D MON @ PI LA CIENEGA BLVD 32FT± W C/L 0.45MI± N STOCKER ST 580FT± S OIL FIELD ROAD OVERPASS NO B 983	SY 4340
CULVER (1960)	300.000	R D MON @ PI LA CIENEGA BLVD 5FT± W C/L 0.8MI± N STOCKER ST 445FT± N OIL FIELD ROAD OVERPASS NO B 983	SY 4341
CULVER (1960)	225.445	R D MON @ PI LA CIENEGA BLVD 32FT± E C/L 1.0MI± N STOCKER ST	SY 4342
CULVER (1960)	115.038	R D MON @ PI LA CIENEGA BLVD 28FT± E C/L 0.2MI± S RODEO RD	SY 4343
CULVER (1960)	294.641	R D MON @ P O S T IN WELL 7IN DN 25FT± N C/L STOCKER ST + 600FT± E LA CIENEGA BLVD	SY 4344
CULVER (1960)	303.233	R D MON @ P O S T IN WELL 7IN DN 25FT± N C/L STOCKER ST + 725FT± E LA CIENEGA BLVD + 300FT± W FAIRFAX AVE	SY 4345
CULVER (1960)	322.106	LACE HEX DRILL STEEL MON @ OR NR C/L INT STOCKER ST + FAIRFAX AVE	SY 4346
CULVER (1960)	342.070	R D MON IN WELL @ PI 500FT± E FAIRFAX AVE + 14FT± N C/L STOCKER AVE FT N C/L STOCKER AVE	SY 4347
CULVER (1960)	365.530	L+BR SCREW CTR HDWL OF CULV FOR CIL PIPES 1000FT± E C/L FAIRFAX AVE + 58FT± N C/L STOCKER ST MKD (PBM NO 216)	SY 4348
CULVER (1960)	406.164	L+BR SCREW S CB TRAFFIC ISLAND ON STOCKER ST OPP LIGHT STANDARD 500FT± W C/L LA BREA AVE MKD (PBM NO 215)	SY 4349
CULVER (1960)	431.198	R D MON 6IN DN ON OR NR C/L INT STOCKER ST + LA BREA AVE	SY 4350
CULVER (1960)	432.704	R D MON 12IN DN ON OR NR C/L INT OVERHILL DR + OLD STOCKER ST C/L TO E	SY 4351
CULVER (1960)	409.585	L+BN E CB TRAFFIC ISLAND ON STOCKER ST OPP STEEL LIGHT STANDARD 1FT± S OF END OF ISLAND 500FT± E C/L LA BREA AVE	SY 4352
CULVER (1960)	366.682	LACE MON IN WELL 8IN DN ON P O S T 165FT± N BC OF 2ND CURVE ON STOCKER ST 16FT± W C/L STOCKER ST 1200FT± NE C/L LA BREA AVE	SY 4353
CULVER (1960)	348.512	L+BN W CB DON LORENZO DR 41FT± N C/L STOCKER ST + 20FT± W C/L DON LORENZO DR 3FT± N OF END OF CB	SY 4354
CULVER (1960)	327.462	L+BN E END OF CB OF CONC DRAINAGE STRUCTURE 300FT± E C/L DON LORENZO DR + 40FT± N C/L STOCKER ST	SY 4355
CULVER (1960)	305.400	L+BN E END CB OF CONC DRAINAGE STRUCTURE 700FT± W DON MIGUEL DR 40FT± N C/L STOCKER ST	SY 4356

QUAD-YEAR	ELEV	DESCRIPTION (INCLUDE QUAD AND YEAR IN DESCRIPTION)	BM NUMBER
CULVER (1960)	288.920	L+BN E CB DON MIGUEL DR 40FT± N C/L STOCKER ST + 30FT± E C/L DON MIGUEL DR 3FT± N OF END OF CB	SY 4357A
CULVER (1960)	199.759	L+BN S CB 2FT± E BCR @ SE COR STOCKER ST + PRESIDIO DR 28FT± S + 45FT± E C/L INT	SY 4360
CULVER (1960)	156.625	FLT HD SPK S CB NE COR CATCH BASIN ON SW COR ANGELES VISTA BLVD + STOCKER ST 4FT± SW BCR MKD (BM)	SY 4362
CULVER (1960)	131.067	L+FLT HD SPK @ W END DROP INLET @ NW COR STOCKER ST + CRENSHAW BLVD 30FT± N + 80FT± W C/L INT	SY 4363A
CULVER (1960)	115.034	LACE TRAVERSE DISC @ C/L INT CRENSHAW BLVD + SANTA BARBARA AVE MKD (HOLLY H 11A)	SY 4364A
CULVER (1960)	131.863	CS MON IN WELL 1FT± OFF ST EDGE OF WK 5FT± BACK OF MCR @ SE COR CRENSHAW BLVD + VERNON AVE MKD (BM 27 56 1953 RE 63)	SY 4365A
CULVER (1960)	21.436	FLT HD SPK W CB 1FTS8 N BCR @ SW COR SLAUSON AVE + SEPULVEDA BLVD 60FT± S + 35FT± W C/L INT	SY 4750
CULVER (1960)	21.963	USC+GS MON NO 775 1945 IN WELL @ NW COR SEP LVEDA BLVD + SLAUSON AVE 44FT N + 57FT± W C/L INT	SY 4751
CULVER (1960)	27.885	L+BR NW CB 20FT± S BCR @ SW COR RUDMAN DR + PLAYA ST 65FT± S + 26FT± W C/L INT	SY 4752
CULVER (1960)	28.139	FLT HD SPK NW CB 1FT± N BCR @ NW COR RUDMAN DR + PLAYA ST 58FT± N + 26FT± W C/L INT MKD (PBM 344)	SY 4753
CULVER (1960)	52.206	RDBM TAG E CB 2FT± S BCR @ SE COR RANCH RD + OVERLAND AVE 28FT± E + 68FT± S C/L INT	SY 4754
CULVER (1960)	56.502	L+BR SCREW E CB @ BCR NE COR KELMORE ST + OVERLAND AVE 90FT± N + 28FT± E C/L INT	SY 4755
CULVER (1960)	48.151	LACE BR DISC IN WELL 13IN DN @ C/L INT OVERLAND AVE + JEFFERSON BLVD MKD (HOLLYWOOD A 12 A)	SY 5150
CULVER (1960)	60.870	LACE MON IN CONC 10IN DN IN WELL APPROX C/L JEFFERSON BLVD 0.4MI± NE OVERLAND AVE	SY 5151
CULVER (1960)	82.917	LACE MON IN CONC 10IN DN IN WELL C/L JEFFERSON BLVD @ BEG CURVE 0.7MI± NE OVERLAND AVE	SY 5152
CULVER (1960)	72.201	FC BR DISC IN CONC 6IN DN DN JEFFERSON BLVD @ HETZLER RD 2FT± BACK OF CHAIN LINK FENCE @ E END MOVIE SETS	SY 5153
CULVER (1960)	90.676	CS MON IN WELL 24IN DN IN DIVIDER ISLAND C/L RODEO RD 75FT± W C/L LANAWEE AVE	SY 5154
CULVER (1960)	96.271	E 3/4IN HEX BAR OF 2 BARS IN CONC 10IN DN IN WELL @ C/L INT JEFFERSON BLVD + RODEO RD + LA CIENEGA BLVD MKD (CITY OF LA ENGINEERING)	SY 5155
CULVER (1960)	99.872	LACE MON 10IN DN IN WELL APPROX C/L INT RODEO RD + HAUSER BLVD	SY 5156
CULVER (1960)	102.877	LACE MON 10IN DN IN WELL C/L RODEO RD + 32FT± E C/L REDONDO BLVD	SY 5157
CULVER (1960)	98.893	LACE MON 13IN DN IN WELL @ C/L INT RODEO RD + LA BREA AVE	SY 5158

JUL 1964

LOS ANGELES COUNTY ROAD DEPARTMENT
SURVEY SECTION FIELD ENGINEERING DIVISION

PAGE 3

QUAD-YEAR	ELEV	DESCRIPTION (INCLUDE QUAD AND YEAR IN DESCRIPTION)	BM NUMBER
CULVER (1960)	100.171	CS MON IN WELL @ SE COR SANTA BARBARA AVE + COLISEUM ST 1FT# BACK OF CB @ JCT NE EDG WK + CB MKD (BM 27 54 1953 RE 69)	SY 5159
CULVER (1960)	179.491	BT SPK W CB CRENSHAW BLVD 154FT# S OF S CB 57TH ST	SY 5160
CULVER (1960)	179.657	CS MON IN WELL 8IN DN ON SW COR CRENSHAW BLVD + 57TH ST 50FT S + 82FT W C/L INT 10FT W OF W CB MKD (BM 27 57C 1960)	SY 5161
CULVER (1960)	160.838	CS MON 9IN DN IN WELL 45FT# W C/L CRENSHAW BLVD + 75FT# N C/L 66TH ST MKD (BM 27 58A 1960 RE 5869)	SY 5162
BASELINE (1955)	160.387	USC+GS DISC TOP CONC POST @ CRENSHAW BLVD + AT+SFRR CROSSING 12FT# NW OF N RAIL + 13FT# E OF E CB CRENSHAW BLVD MKD (A-415 1935)	SY 5163
BASELINE (1955)	159.429	USC+GS DISC TOP OF CONC POST ON AT+SFRR R/W BET W 67TH ST + CRENSHAW BLVD 14FT NWLY OF N RAIL 19FT SLY OF S CB 67TH ST + 5FT N ELY WHISTLE POST MKD (Z 414 1935)	SY 5164
BASELINE (1955)	177.579	USC+GS DISC TOP CONC POST @ INT FLORENCE AVE + REDONDO BLVD 19FT# NE OF CB @ CURVE OF JCT + 18FT# SE C/L SFRR TRACK MKD (U 415 1935)	SY 5165
BASELINE (1955)	176.137	USC+GS DISC TOP CONC POST SW OF INT FLORENCE AVE + REDONDO BLVD 23FT# SE C/L SFRR TRACKS 22FT# W LIONS CLUB CONC MON + 12FT# NW OF NW CB FLORENCE AVE MKD (V 415 1935)	SY 5166
BASELINE (1955)	174.851	USC+GS DISC LIN DN 12FT# N OF N CB 70FT# N C/L FLORENCE AVE + 1300FT# E PRAIRIE AVE MKD (W 415 1935)	SY 5167
BASELINE (1955)	173.899	USC+GS DISC FLUSH 12FT# N OF N CB 70FT N C/L FLORENCE AVE + 1500FT# E PRAIRIE AVE MKD (X 415 1935)	SY 5168
BASELINE (1955)	165.473	USC+GS DISC LIN UP 7FT# N OF N CB + 62FT# N C/L FLORENCE AVE + 2FT# E C/L PROD PRAIRIE AVE MKD (E 416 1935)	SY 5169
BASELINE (1955)	162.456	USC+GS DISC FLUSH 5FT# N OF N CB + 60FT N C/L FLORENCE AVE + 310FT# W C/L PRAIRIE AVE MKD (G 416 1935)	SY 5170
BASELINE (1955)	155.271	USC+GS DISC FLUSH 5FT# N OF N CB + 60FT# N C/L FLORENCE AVE + 230FT# E C/L CENTINELA AVE MKD (L 416 1935)	SY 5171
BASELINE (1955)	153.534	USC+GS DISC TOP CONC POST 44FT# NE OF NE CB CENTINELA AVE + 4FT# NW OF NW CB FLORENCE AVE + 31FT# SE C/L SFRR TRACKS MKD (M 416 1935)	SY 5172
BASELINE (1955)	130.365	USC+GS DISC TOP CONC POST @ INT LA BREA AVE + FLORENCE AVE 18FT# W OF W CB + 28FT# SE C/L SFRR TRACKS MKD (D 417 1935)	SY 5173
BASELINE (1955)	128.967	USC+GS DISC 2IN UP 4FT# N OF N CB + 34FT N C/L FLORENCE AVE + 200FT# W C/L LA BREA AVE + 34FT# SE C/L SFRR TRACKS MKD (E 417 1935)	SY 5174
BASELINE (1955)	124.530	USC+GS DISC 2IN UP 5FT# N OF N CB FLORENCE AVE + 314FT# W OF W CB LA BREA AVE + 34FT# S C/L SFRR TRACKS MKD (F 417 1935)	SY 5175

JUL 1964

LCS ANGELES COUNTY ROAD DEPARTMENT
 SURVEY SECTION FIELD ENGINEERING DIVISION

PAGE 4

QUAD-YEAR	ELEV	DESCRIPTION (INCLUDE QUAD AND YEAR IN DESCRIPTION)	BM NUMBER
BASELINE (1955)	120.803	USC+GS DISC FLUSH 4FT± N OF N CB + 34FT± N C/L FLORENCE AVE + 72FT± E C/L GREVILLEA AVE MKD (G 417 1935)	SY 5176
BASELINE (1955)	116.129	USC+GS DISC TOP CONC POST 313FT± W C/L IVY AVE + 28FT± N C/L SFRR TRACKS 16FT± E OF STA MKD (N 417 1935)	SY 5177
BASELINE (1955)	114.730	USC+GS DISC TOP CONC POST 163FT± E C/L EUCALYPTUS AVE + 58FT± N C/L SFRR TRACKS + 55FT± S LOADING DOCK MKD (16 1922 RESET 1946)	SY 5178
BASELINE (1955)	76.669	LACE 3/4IN HEX BAR IN WELL DN C/L FREEMAN BLVD 13FT± S PERR TRACKS	SY 5179
BASELINE (1955)	73.868	LACE 3/4IN HEX BAR IN WELL THORNBURN ST @ PI 477FT± W FREEMAN BLVD	SY 5180
BASELINE (1955)	84.148	LACE 3/4IN HEX BAR IN WELL @ C/L INT LA TIJERA BLVD + THORNBURN ST (TO THE E)	SY 5181
BASELINE (1955)	45.494	LACE 3/4IN HEX BAR IN WELL CENTINELA AVE @ PI 0.65MI± SE SEPULVEDA BLVD	SY 5182
BASELINE (1955)	49.323	LACE 3/4IN HEX BAR IN WELL SFT± SW C/L CENTINELA AVE 0.45MI± SE SEPULVEDA BLVD @ TOP OF A HILL	SY 5183
BASELINE (1955)	28.940	USC+GS DISC 38FT± E C/L SEPULVEDA BLVD 102FT± S C/L CENTINELA @ CONC CULV IN TOP E HDWL 1FT± UP FROM ROAD MKD (M 776 1945)	SY 5184
BASELINE (1955)	29.085	L+N 38FT± E C/L SEPULVEDA BLVD + 122FT± S C/L CENTINELA AVE @ CONC CULV CTR E HDWL 1FT± UP FROM ROAD	SY 5185
CULVER (1960)	85.005	SQ HD SPK W CB N OF BCR @ NW COR LA TIJERA BLVD + THORNBURN ST 50FT± N + 38FT± W C/L INT	SY 5186
CULVER (1960)	110.571	RDBM TAG W CB LA TIJERA BLVD 27FT± S C/L PROD KNOWLTON ST	SY 5187
CULVER (1960)	111.468	FLT HD SPK N CB 1FT± E BCR @ NE COR LA TIJERA BLVD + KNOWLTON ST 18FT± N + 60FT± E C/L INT	SY 5188
CULVER (1960)	126.109	LACE MON IN WELL 10IN DN 35FT± N + 5FT± E C/L IN FREEMAN BLVD + CENTINELA AVE	SY 5189
CULVER (1960)	125.481	LACE MON IN WELL 18IN DN @ C/L INT FREEMAN BLVD + CENTINELA AVE	SY 5190
CULVER (1960)	142.030	RDBM TAG W CB LA CIENEGA BLVD SERVICE ISLAND 1FT± N BCR 42FT± W C/L LA CIENEGA 28FT± N C/L 64TH ST	SY 5191
CULVER (1960)	142.421	WIRE SPK W CB LA CIENEGA BLVD SERVICE ROAD 5FT± N BCR 88FT± W C/L LA CIENEGA + 47FT± N C/L 64TH ST	SY 5192
CULVER (1960)	160.886	RDBM TAG E SIDE CATCH BASIN CTR ISLAND LA CIENEGA BLVD 10FT± N PI 248FT± S SLAUSON AVE	SY 5193
CULVER (1960)	255.952	RDBM TAG E CB OF ISLAND LA CIENEGA BLVD 0.25MI± N SLAUSON AVE (NR TOP HILL)	SY 5194
CULVER (1960)	255.256	L+BR SCREW CHIS SQ E SIDE E CONC GUTTER LA CIENEGA BLVD 0.25MI± N SLAUSON AVE (NR TOP HILL) MKD (PBM 255)	SY 5195
CULVER (1960)	293.980	L+T W EDGE OF CONC GUTTER OF LA CIENEGA BLVD 13FT± W PI 580FT± S OIL FIELD RD OVERPASS NG B 983 MKD (BM)	SY 5196

QUAD-YEAR	ELEV	DESCRIPTION (INCLUDE QUAD AND YEAR IN DESCRIPTION)	BM NUMBER
CULVER (1960)	301.114	L+T W CR LA CIENEGA BLVD 38FT± W PI 445FT± N OF OIL FIELD RD OVERPASS NO B 983 MKD (BM)	SY 5197
CULVER (1960)	226.914	L+T E CB LA CIENEGA BLVD 12FT± E PI 1.0MI± N STOCKER ST + 12FT± S BEG OF ROLLED CB MKD (BM)	SY 5198
CULVER (1960)	115.467	L+T E CB SERVICE ISLAND 25FT± W PI LA CIENEGA BLVD 0.2MI± S RODEO RD MKD (BM)	SY 5199
CULVER (1960)	96.972	L+BR SCREW W CB 3FT± S BCR @ SW COR RODEO RD + LA CIENEGA BLVD 57FT± S + 40FT± W C/L INT MKD (PBM)	SY 5200
CULVER (1960)	22.217	L+SPK N CB 11FT± E BCR @ NE COR SLAUSON AVE + KNIGHTS BRIDGE AVE	SY 5201
CULVER (1960)	28.991	L+T CONC WK @ ENT BLDG NO 6110 SLAUSON AVE 53FT± S + 33FT± E C/L INT SLAUSON + CAMILLE AVE	SY 5202
CULVER (1960)	28.677	L+SPK IN CB 6FT± W BC + 75FT± W + 36FT± N C/L INT SLAUSON AVE + HAMMUN AVE	SY 5203
CULVER (1960)	100.922	L+SCREW CTR CB RET 63FT± N C/L DOUBLE DRIVE ENT TO HOLY CROSS CEMETERY	SY 5204
CULVER (1960)	107.053	USC+GS MON 2IN UP 1FT± BACK CTR CB RET @ CTR DOUBLE DRIVE TO FOX HILLS COUNTRY CLUB + 62FT± S SLAUSON AVE MKD (X 776 1945)	SY 5205
CULVER (1960)	120.389	L+T CONC CB 3FT± E OF SE COR SERVICE STATION STUCCO BLDG TOP ACCESS ROAD FOX HILLS GOLF COURSE S OF SLAUSON AVE	SY 5206
CULVER (1960)	122.745	L+BN NR NE COR CONC WK 10FT± E OF NE COR LONG STUCCO BLDG TOP ACCESS ROAD FOX HILLS GOLF COURSE S OF SLAUSON AVE	SY 5207
CULVER (1960)	144.045	USC+GS BR DISC MON FLUSH 50FT± S C/L SLAUSON AVE 1000FT± E ENT TO FOX HILLS COUNTRY CLUB MKD (P 169 1934)	SY 5208
CULVER (1960)	161.190	RDBM TAG IN CB 38FT± N C/L SLAUSON AVE + 795FT± W SHENANDOAH AVE	SY 5209
CULVER (1960)	160.184	L+SCREW CB CTR CATCH BASIN 35FT± S C/L SLAUSON AVE + 795FT± W SHENANDOAH AVE	SY 5210
CULVER (1960)	171.641	L+SCREW IN CB 1FT± E BC 37FT± W + 38FT± S C/L INT SLAUSON AVE + SHENANDOAH AVE	SY 5211
CULVER (1960)	175.775	RDBM TAG IN CB 1FT± N BC 117FT± N + 18FT± E C/L INT SLAUSON AVE + SHENANDOAH AVE	SY 5212
CULVER (1960)	192.588	RDBM TAG IN CB 5FT± N BC 119FT± N + 18FT± E C/L C/L INT SLAUSON AVE + CORNING AVE	SY 5213
CULVER (1960)	190.015	PK IN S CB SLAUSON AVE 90FT± W + 38FT± S C/L INT SLAUSON AVE + CORNING AVE	SY 5214
CULVER (1960)	187.685	L+N S CB SLAUSON AVE 2FT± E OF W END OF BRIDGE (B 900) OVERPASS LA CIENEGA BLVD	SY 5215
CULVER (1960)	236.322	L+BN S CB 1FT± W BCR @ SW COR SLAUSON AVE + KINGS RD 78FT± S + 45FT± W C/L INT MKD (BM)	SY 5216
CULVER (1960)	238.144	LACE MON IN WELL 12IN DN @ C/L INT KINGS RD + SLAUSON AVE	SY 5217
CULVER (1960)	259.682	LACE MON IN WELL 6IN DN @ C/L INT FAIRFAX AVE + SLAUSON AVE	SY 5219

QUAD-YEAR	ELEV	DESCRIPTION (INCLUDE QUAD AND YEAR IN DESCRIPTION)	BM NUMBER
CULVER (1960)	236.193	L+BR SCREW S CB 40FT± W BCR @ SW COR SLAUSON AVE + LA BREA AVE 35FT± S + 107FT± W C/L INT MKD (TBM 35C)	SY 5220
CULVER (1960)	239.230	LACE MON IN WELL 12IN DN @ C/L INT SLAUSON AVE + LA BREA AVE	SY 5221
CULVER (1960)	301.480	LACE MON IN WELL 10IN DN @ BC OF FIRST CURVE 900FT± N SLAUSON AVE ON C/L LA BREA AVE	SY 5222
CULVER (1960)	308.928	LACE MON IN WELL 14IN DN @ PI FIRST CURVE + 1000FT± N SLAUSON AVE ON LA BREA AVE (USE SW EDGE)	SY 5223
CULVER (1960)	370.795	2IN IP W/CAP 1900FT± N C/L SLAUSON AVE + 35FT± E C/L LA BREA AVE 1FT± N OF 2IN IP MARKER 3FT UP MKD (BM B 023)	SY 5224
CULVER (1960)	374.457	2IN IP W/CAP IN WELL 8IN DN 2000FT± N SLAUSON AVE + 28FT± E C/L LA BREA AVE MKD (22)	SY 5225
CULVER (1960)	419.576	FLT HD SPK S CB DON LORENZO DR 4FT± E BCR @ SE COR LA BREA AVE + DON LORENZO DR 18FT± S + 83FT± E C/L INT	SY 5226
CULVER (1960)	417.517	FLT HD SPK E CB 5FT± N BCR @ NE COR DON ALBERTO PL + DON LORENZO DR 80FT± E + 45FT± N C/L INT	SY 5227
CULVER (1960)	336.958	LACE MON IN WELL 12IN DN @ P O T C/L LA BREA AVE 1000FT± N DON LORENZO DR MKD (HOLLYWOOD F 12A)	SY 5228
CULVER (1960)	270.966	LACE MON IN WELL 12IN DN PI OF CURVE 0.4MI± N DON LORENZO DR	SY 5229
CULVER (1960)	257.959	LACE MON IN WELL 2IN IP 12IN DN 0.1MI± N PI SECOND CURVE STOCKER ST 30FT± E C/L LA BREA AVE	SY 5230
CULVER (1960)	180.021	L+BN S CB 1FT± E BCR @ SW COR LA BREA AVE + VERNICA ST 18FT± S + 60FT± W C/L INT MKD (BM)	SY 5231
CULVER (1960)	177.342	L+BR SCREW W CB 3FT± N FUTURE BCR @ NW COR LA BREA AVE + VERNICA ST 42FT± N + 38FT± W C/L INT MKD (PBM 176)	SY 5232
CULVER (1960)	114.890	FLT SPK 6FT± W BCR @ SW COR LA BREA AVE + COLISEUM ST 60FT± W + 30FT± S C/L INT	SY 5233
CULVER (1960)	113.958	FLT HD SPK N CB 5FT± W BCR @ NW COR LA BREA AVE + COLISEUM ST 60FT± W + 30FT± N C/L INT MKD (PBM 45)	SY 5234
CULVER (1960)	329.485	R D MON IN WELL 6IN DN @ PI CURVE 175FT± E C/L INT FAIRFAX AVE + STOCKER ST	SY 5235
CULVER (1960)	410.346	BR CAP 6IN DN @ PI FIRST CURVE W LA BREA AVE 400FT± W C/L 50FT± S C/L STOCKER ST	SY 5236
CULVER (1960)	351.715	CS MON IN WELL 8IN DN P O S T STOCKER ST 200FT± S DON LORENZO DR	SY 5237
CULVER (1960)	287.305	LACE MON IN WELL 10IN DN @ C/L INT STOCKER ST + DON MIGUEL DR	SY 5238
CULVER (1960)	253.104	RDBM TAG S CB SERVICE ROAD STOCKER ST @ DON TOMCSC 25FT± E C/L INT	SY 5239
CULVER (1960)	200.617	R D MON IN WELL 12IN DN C/L PRESIDIO DR 35FT± S STOCKER ST MKD ON WK @ MON (FA 20049 19 0510)	SY 5240

JUL 1964

LCS ANGELES COUNTY ROAD DEPARTMENT
SURVEY SECTION FIELD ENGINEERING DIVISION

PAGE 7

QUAD-YEAR	ELEV	D E S C R I P T I O N (INCLUDE QUAD AND YEAR IN DESCRIPTION)	BM NUMBER
CULVER (1960)	152.935	RDBM TAG IN CB 2FT# S BCR @ SE COR STOCKER ST + ANGELES VISTA BLVD 45FT# S + 52FT# E C/L INT	SY 5241
CULVER (1960)	129.037	LACE MON IN WELL 9IN DN @ C/L INT CRENSHAW BLVD + STOCKER ST	SY 5242